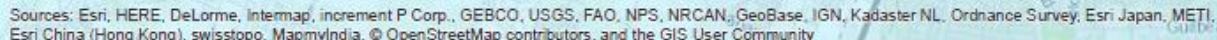


# The Nature Conservancy



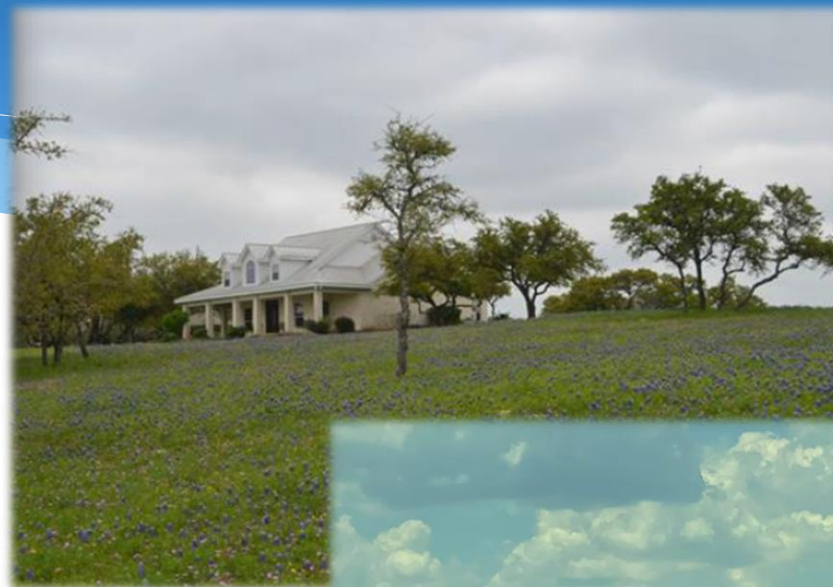
Hampton Ranch  
Moos Ranch

# Bexar County



## Highway 211/Hampton Property (~118 Acres) Bexar County

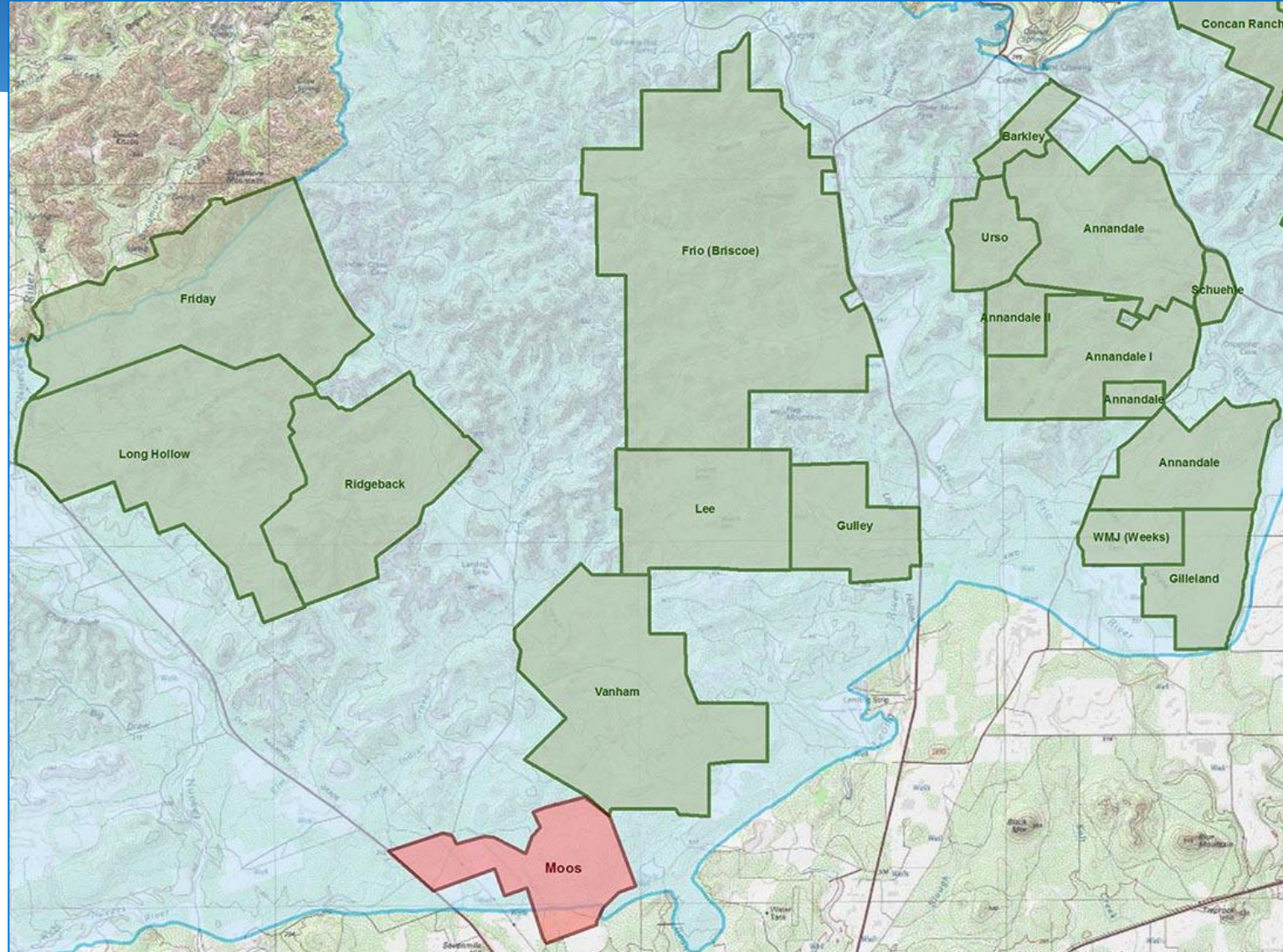
- 118 acres located in Recharge Zone
- 50% of SET Model
- Located across and adjacent to TPWD/Government Canyon State Natural Area properties acquired under Prop 3
- TPWD has increased funding match toward acquisition
- Appraisal completed; Geological Assessment reports high water quality and high water quantity benefits
- Owner has countered with two fee simple acquisition options:
  - 98 Acres w/20-acre carve out and no improvements
  - 118 Acres w/all improvements
- **Requesting Stage 2 consideration**







# Moos Ranch (2,894 Acres) Uvalde County







## Moos Ranch (2,894 Acres) Uvalde County

- North of Uvalde, adjacent to Vanham Ranch (SAWS easement)
- Top 50% in SET model
- Previously considered by CAB; EAA ranked as a high priority in 2008 geological evaluation
- GA reports high to very high water quantity and high water quality benefits; appraisal completed
- Owner offering phased CE acquisition opportunity
- **Requesting Stage 2 consideration**

